



Coastal Drilling East, LLC



WWW.COASTALDRILLINGEAST.COM



OUR COMPANY

Coastal Drilling East, LLC (CDE) began operations in 2002 as a simple drilling foundation contractor. Since then, the company has grown and evolved into a specialty niche geotechnical construction contractor, building custom equipment for dam foundation and dam anchor work, and custom equipment for drill rigs and grout plants. Today, Coastal Drilling East offers a wide range of geotechnical capabilities and prides itself on its ability to work closely with project stakeholders and engineers in resolving some of the toughest geotechnical challenges.

**Building a reputation takes time,
hard work, and dedication to
always exceed expectations.**

CDE's focus on dam foundation, grouting and anchor installation helped build its experience and reputation as a hard working specialty contractor capable of doing whatever it takes to get the job done safely and ahead of schedule. Initially focused on the eastern United States, with the successful completion

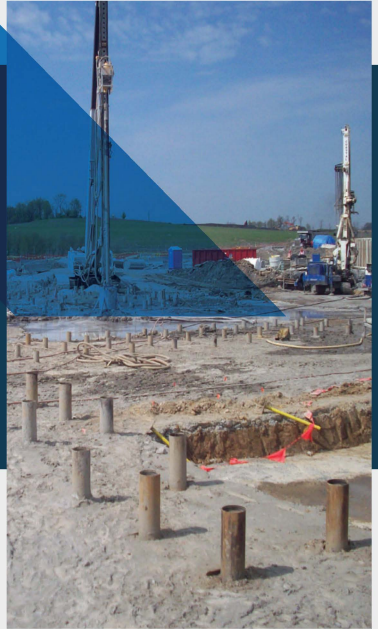
"OUR MISSION IS TO LITERALLY PROVIDE THE FOUNDATION UPON WHICH OUR CLIENTS BUILD."

of each project, CDE continued to grow in size, scope of services and territory. Clients range from small, single-project entities to large multinational projects.

REPUTATION

FOUNDATIONS

BUILDING THE FOUNDATIONS OF OUR FUTURE REQUIRES A TREMENDOUS LEVEL OF DISCIPLINE, ATTENTION TO DETAIL, INTEGRITY AND HONESTY. DOING THE RIGHT THING EVEN WHEN NO ONE IS THERE TO SEE IT IS SOMETHING CDE CREWS LIVE BY EACH DAY ON JOBSITES THROUGHOUT THE U.S.



Collective experience and capabilities make Coastal Drilling East, LLC the name to trust.

CDE has developed technologies and protocols that separate it from other geotechnical construction firms. We are dedicated to doing the right thing even if no one is there to witness it.



ENGINEERING Value Added

Our in house team of engineers and project managers work hand in hand with our clients throughout the construction process to solve problems and identify proactive, cost saving solutions.



COST SAVINGS We Deliver

Our experience, unmatched resources, and the quality of our staff, afford our company the ability to identify and implement the best possible solution available for our clients.

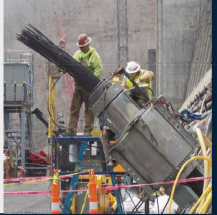


MICROPILES

Our capabilities cover a range of applications including: deep foundation, permanent & temporary earth retention, and slope stabilization. We have the ability to install micropiles in areas with restricted overhead space.

ANCHORS

We have experience in a wide range of post-tensioned structural anchoring projects (Bar, Epoxy, Strand) including high capacity anchors for dams, hydraulics and marine structures.



DIRECTIONAL DRILLING

Cutting-edge, real-time optical guidance and verification technology delivers high precision directionally drilled bore holes delivering best-in-class accuracy to our clients.

GROUTING

Our Ground improvement capabilities include: compaction grouting for increased bearing capacity, low-mobility grouting for void, cavity, and mine filling, as well as high-mobility grouting for rock foundation improvement and cutoff walls.



CAPABILITIES

SHORING & LAGGING

We offer a wide range of complex shoring solutions including micropiles, soldier beam walls, post & panel walls, or combination walls that offer exceptional strength.



DRILLED PIERS

Our large diameter drilling capabilities are unmatched in the geotechnical industry. Solutions provided include: caissons, drilled piers, post & panel walls, secant piles, secant pile walls, as well as small and large shaft construction.

HELICAL PILES

Our helical pile products utilize deep foundation piling technology that has been developed and used in various forms over the last 20 years. Our helical piles can provide up to 300,000 lbs. of vertical load capacity (tension/compression).



ADDITIONAL SERVICES

AUGERCAST PILES
CATHODIC PROTECTION
SHOT CRETE / SOIL NAILS
GROUT CURTAINS

RELIEF WELL DRILLING
NEW HOLE SERVICES
PILE TESTING SERVICES
AND MORE!



GEOTECHNICAL CONSTRUCTION

Subsurface conditions vary greatly, often within the same construction site. We provide innovative solutions using state-of-the-art technologies in ground improvement, stabilization and geosteel support. We work closely with our clients to develop the best approach to resolve complex subsurface challenges.



Equipment & Facilities

Our company owns and operates a comprehensive fleet of drilling rigs and ancillary equipment that meets or exceeds the capabilities of any other company in the industry. Our specialized equipment and knowledge enable us to consistently deliver results on the most challenging projects.



Supporting Statistics

Our company carries an experience modifier rate (EMR) that is below the national average and which is indicative of our corporate commitment to safety and health standards.



Dedicated Personnel

You won't find a more well trained or experienced staff than the our team. We've had boots on the ground working geotechnical projects coast to coast for decades. Our experience allows customers throughout the country to count on us to rise to the challenges of their projects.



High Capacity ANCHORS

CDE has successfully installed some of the largest strand anchors in the United States. On a recent project, our team installed 278 61-strand anchors delivering over 3 million pounds of ultimate capacity. CDE partners with our clients to deliver the best suited Class 1 or Class 2 anchor solution. Our in house anchor capabilities include bar, epoxy, as well as strand anchors.

UNWAVERING COMMITMENT

We believe in protecting our customer's time and investment. Our goal is supported by uncompromising dedication to quality, safety, and environmental preservation.



Safety

We believe that all injuries as well as safety and environmental incidents, are preventable. We are committed to providing a safe work environment at all times.



Quality

We believe in doing it right the first time, every time. Quality at CDE is a commitment to exceeding customer expectation by delivering our projects on time and on budget.



Environment

We believe in leaving our sites better than we found them. We strive to achieve our operational goals and execute each project without negatively impacting our environment.

DEDICATION



LOCATIONS

Pennsylvania Office
130 Meadow Ridge Road, STE 24
Mt. Morris, PA 15349 USA

Colorado Office
704 Topeka Way
Castle Rock, CO 80109 USA

West Virginia
61 Guston Run Road
Morgantown, WV 26501 USA

PHONE & FAX

Phone: + 1 800 331.0175
+1 304.291.0175
Fax: +1 304.291.0671

EMAIL & ONLINE

Email: geobid@shaftdrillers.com
Website: coastaldrillingeast.com